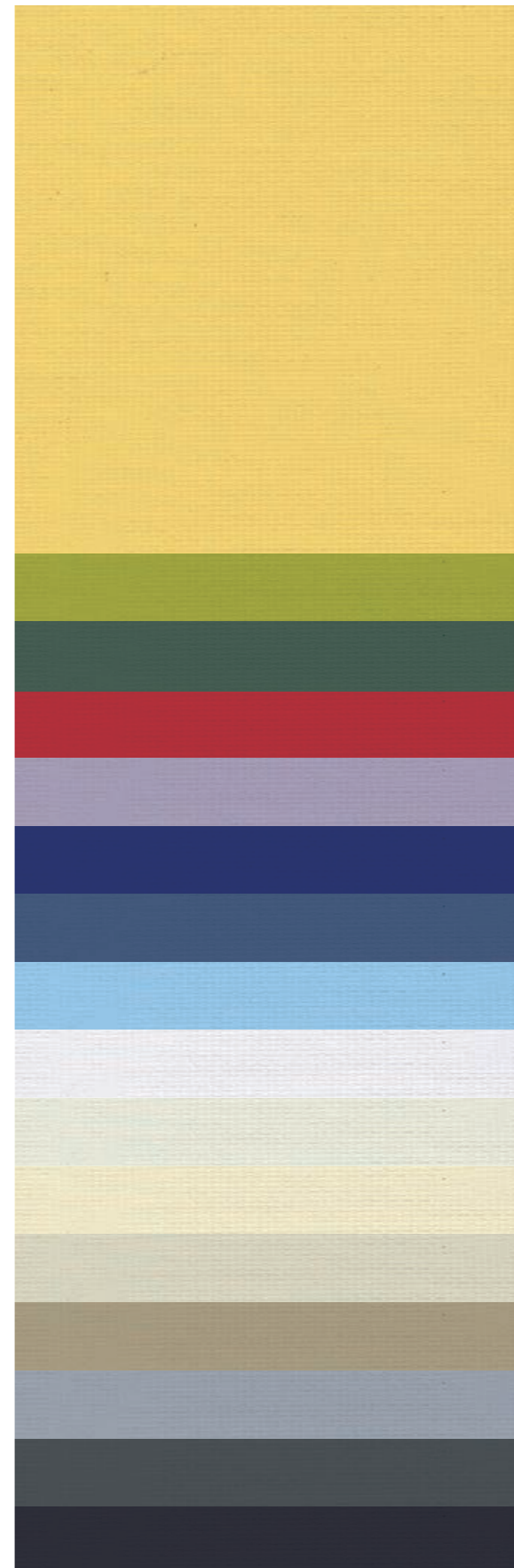


your personal fabric selector

	2300 mm	127 mm	89 mm	63 mm	Solar Trans %	Optical Trans %	Ultraviolet Protection %	Absorption %	Solar Reflection %	Optical Reflection %
Mustard					15	11	100	40	45	49
Apple					16	12	100	33	51	56
Lawn					10	6	100	74	16	19
Cherry					12	8	100	69	19	23
Heather					15	10	100	40	45	52
Cobalt					11	6	100	80	9	12
Marine					14	11	100	41	45	49
Surf					17	13	100	34	49	53
Frost					16	15	100	12	72	84
Linen					16	12	100	15	69	75
Sandstone					13	9	100	23	64	69
Sesame					15	10	100	29	56	61
Tan					16	12	100	45	39	44
Mist					7	3	100	45	48	52
Graphite					18	6	100	69	13	16
Coal					8	2	100	89	3	4



YewdaleDefiant thames fabric

The YewdaleDefiant® Thames fabric is designed for areas where privacy and shading of light is required along with exceptional performance characteristics. The weaving process of this Flame Retardant composition ensures this fabric has a distinguished natural look making it suitable for almost all applications. With a calculated selection of 16 colours to cover the full palette, along with the most advanced range of fabric widths available, fabric joins are kept to a minimum to assist in wastage, design and speed of fabrication. This fabric incorporates Biosafe® which is the international accreditation standard of our proven antimicrobial formula that has been tested under the most stringent measures to ensure effective inhibiting of infection.

- Fabric Composition:** 100% Polyester
- Fabric Range:** 16
- Louvre Widths:** 127mm (5") / 89mm (3.5") / 63mm (2.5")
- Vertical Roll Length:** 100m
- Roller Fabric Width:** 2300mm
- Roller Fabric Length:** 30m
- Fabric Thickness:** 0.30mm
- Fabric Weight:** 220 g/m²
- Fire Retardancy:** Conforms to BS5867, Part 2: Type B 2008
- Shading:** Dimout. Suitable for computer environments
- Colour fastness:** 6-7 (when tested to ISO105-B02:2014)
- Moisture Resistance:** Suitable for moist conditions
- Anti-Bacterial:** Incorporates Biosafe® formula
- Care Instructions:** Wipe with damp sponge. Do not tumble dry; Do not dry clean; Do not iron